

Building A Village's First Medical Clinic—Inala, Tanzania

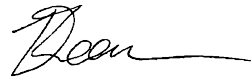
Imagine a community where families no longer have to walk or bike over thirty kilometres to receive medical care. With a small group of dedicated supporters, we are building a medical clinic in Inala, Tanzania. **It will be the first ever clinic in that region**, bringing life-saving healthcare to those who need it most.

Your generosity can help provide essential medical services, maternal care, and emergency treatment for thousands of villagers from three villages and numerous sub-villages, each with over 5,000 residents. Due to the location near a busy highway corridor, thousands more will be able to access the medical services as well.

Every donation is **tax-deductible**, and more than that, it's an investment in a healthier, stronger future for generations to come.

Join us in building a lasting legacy of hope and healing. **Thank you for making a real impact!**

With gratitude,



Daniel Kooman

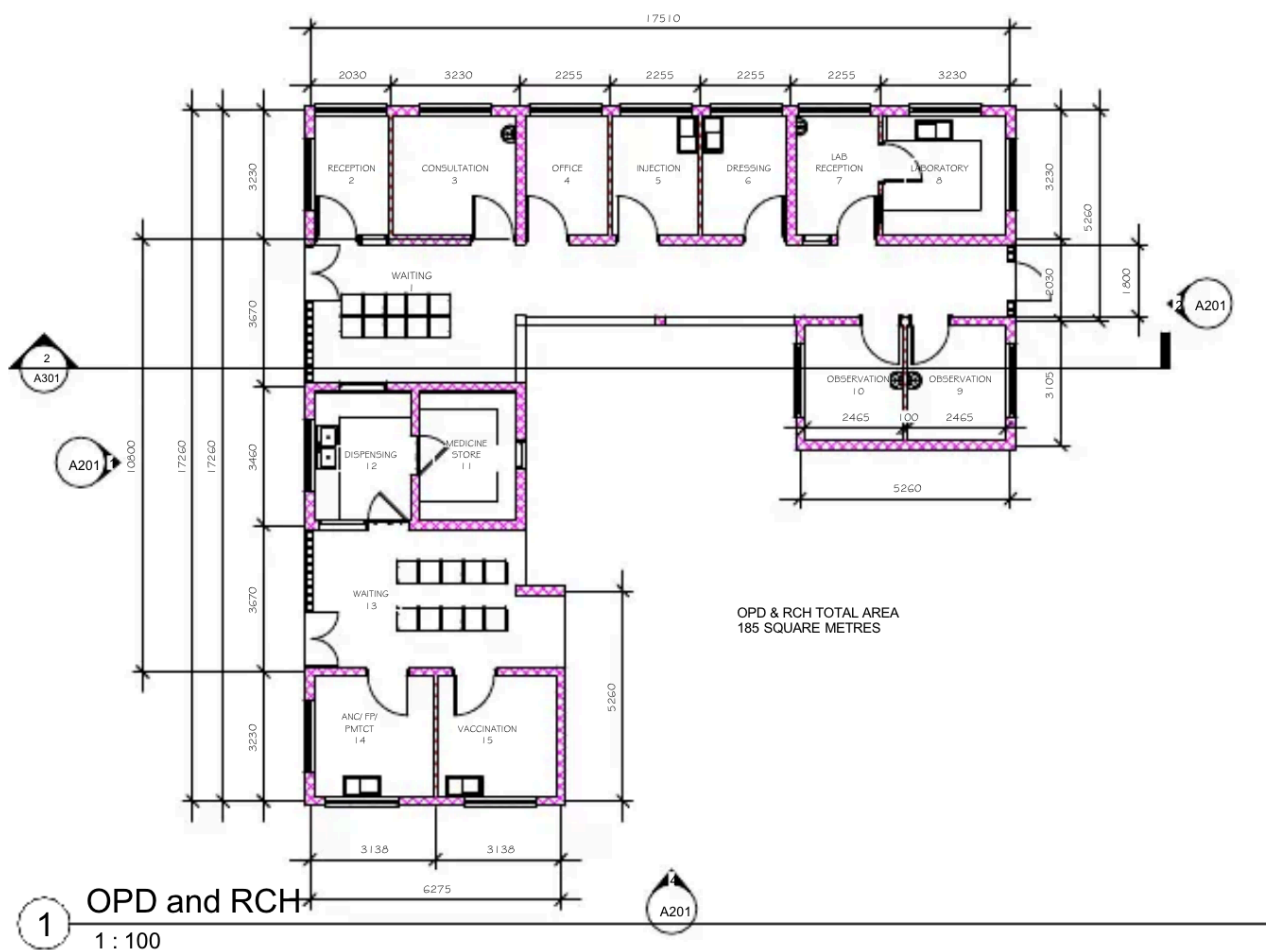
Juma's World, Canada
jumasworld.org



Dream Center Medical Clinic - Phase One, 2025

A charitable Juma's World project in Inala, Tanzania. Project prepared by Daniel Kooman. Local builder Garry Renkema of Monterra Builders, has partnered with Daniel Kooman and Juma's World to make this project a reality.

Vision: Complete a medical clinic on a property Juma's World owns in Tanzania to bring needed medical access and supplies to Inala and surrounding villages. Raise \$100,000 CAD (approximately \$70,000 USD) by April 30, 2025 to complete the first phase of an ongoing medical center, that will eventually include staff housing, and additional clinical and operating rooms. Phase One includes Clinic and Dispensary structure and finishings, septic, plumbing and electrical. **All donations are tax receiptable upon request.**



**this blueprint is from a similar clinic in Tanzania*